



# GAT MONTHLY MEMBERSHIP PROGRESS REPORT

Results as of: 4/30/2023

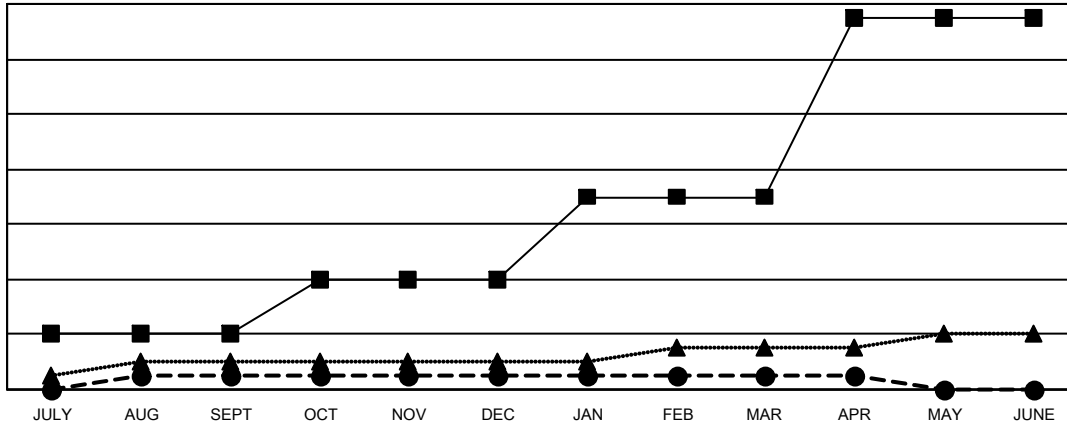
Multiple District 14

LOCATION: PENNSYLVANIA

Clubs			
RESULTS FOR 2022-2023			
QUARTER	NEW CLUB GOAL	NEW CLUBS	DROPPED CLUBS
JULY/AUG/SEPT	4	1	7
OCT/NOV/DEC	4	0	9
JAN/FEB/MAR	6	0	1
APR/MAY/JUNE	13	0	0

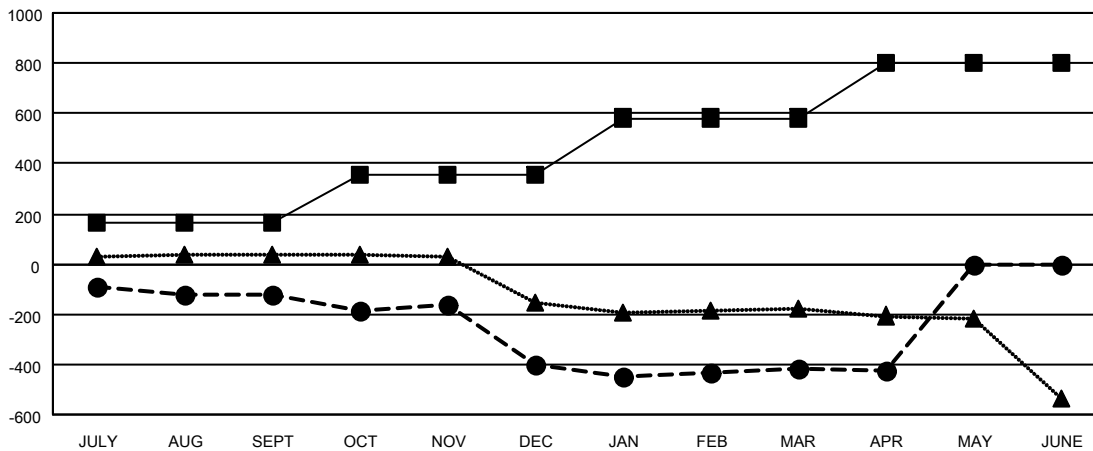
Members			
RESULTS FOR 2022-2023			
QUARTER	MEMBER GROWTH NET GOAL	MEMBER GROWTH ACTUAL	DROPPED MEMBERS ACTUAL (including transfers)
JULY/AUG/SEPT	164	323	405
OCT/NOV/DEC	194	290	521
JAN/FEB/MAR	224	382	356
APR/MAY/JUNE	219	100	106

GOALS AND ACTUAL NEW CLUBS CUMULATIVE



- CURRENT YEAR GOALS FOR NEW CLUBS
- CURRENT YEAR ACTUAL NEW CLUBS
- ▲- LAST YEAR ACTUAL NEW CLUBS

GOALS AND ACTUAL MEMBERS CUMULATIVE



- MEMBER GROWTH NET GOAL
- MEMBER GROWTH ACTUAL
- ▲- LAST YEAR MEMBERSHIP ACTUAL

DROPPED CLUBS: 17	
<b>DROPPED MEMBERS</b>	
DECEASED	315
CLUB CANCELLED	59
OTHER	1,013
<b>TOTAL</b>	<b>1,387</b>

327 CLUBS OF 640 ADDED 1 OR MORE NEW MEMBERS

[CLICK HERE FOR CUMULATIVE MEMBERSHIP DATA](#)

GENDER DISTRIBUTION	
MALE	11,109 (68.51%)
FEMALE	5,103 (31.47%)
NON BINARY	0 (0.00%)
PREFER NOT TO ANSWER	4 (0.02%)
<b>TOTAL FAMILY UNIT MEMBERS</b>	<b>3,151</b>
<b>FAMILY MEMBERS PAYING HALF DUES</b>	<b>1,636</b>